

1539

1539



THE NATIONAL CHARTMAKER SINCE 1807
UNITED STATES - EAST COAST
NORTH CAROLINA

NEW RIVER INLET TO CAPE FEAR

Scale 1:80,000 at Lat. 34°10'

North American Datum of 1983

SOUNDINGS IN FEET
AT MEAN LOWER LOW WATER

Table with columns: SOURCE, PLACE, DATE, and description of data sources and collection methods.

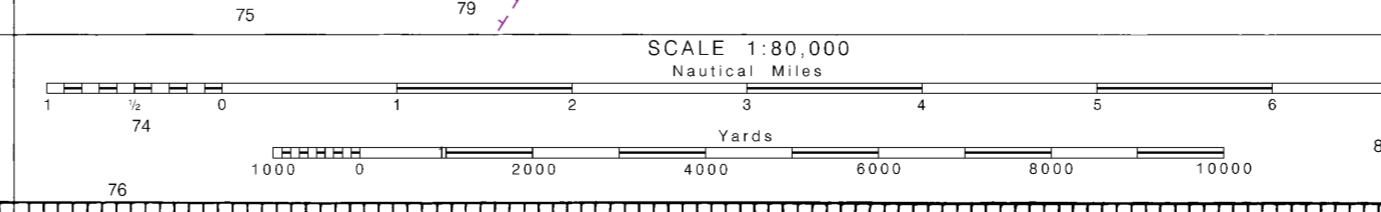
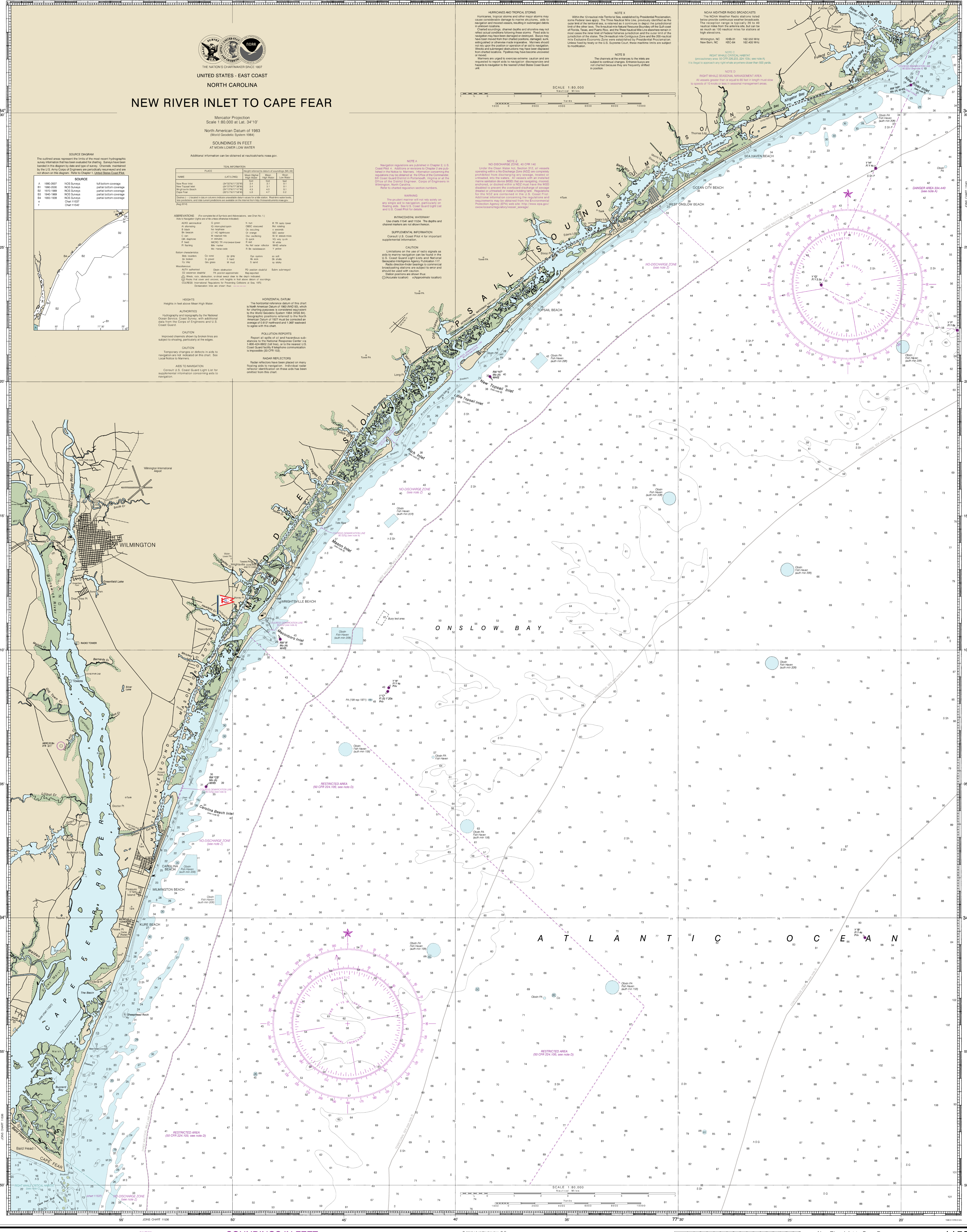
Table with columns: NAME, PLACE, LATITUDE, LONGITUDE, and other identifying information for various locations.

Table with columns: ABBREVIATIONS, PLACE, and descriptions of various symbols and abbreviations used on the chart.

HEIGHTS: Heights in feet above Mean High Water...
AUTHORITIES: Hydrography and geography by the National Ocean Service...
CAUTION: Temporary changes or defects in aids to navigation...
AIDS TO NAVIGATION: Control U.S. Coast Guard Light List...

NOTE 1: Navigation regulations are contained in Chapter 2, U.S. Code...
NOTE 2: Under the Clean Water Act, Section 312...
NOTE 3: The product number will not vary...
NOTE 4: No discharge zone 40 CFR 145...
NOTE 5: No discharge zone 150 CFR 224.105...

NOTE 6: Within the 12 nautical mile Territorial Sea...
NOTE 7: NOAA Weather Radio Broadcasts...
NOTE 8: RIGHT WHALE SEASONAL MANAGEMENT AREA...



1539

1539

Published at Washington, D.C. U.S. DEPARTMENT OF COMMERCE NATIONAL OCEANIC AND ATMOSPHERIC ADMINISTRATION COAST SURVEY

New River Inlet to Cape Fear SOUNDINGS IN FEET - SCALE 1:80,000

Use NOAA electronic navigation charts for the most up-to-date information... This chart was distributed as a PDF (Portable Document Format)...